

# MONTHLY MEMBERSHIP PROGRESS REPORT

LOCATION REP OF SRI LANKA

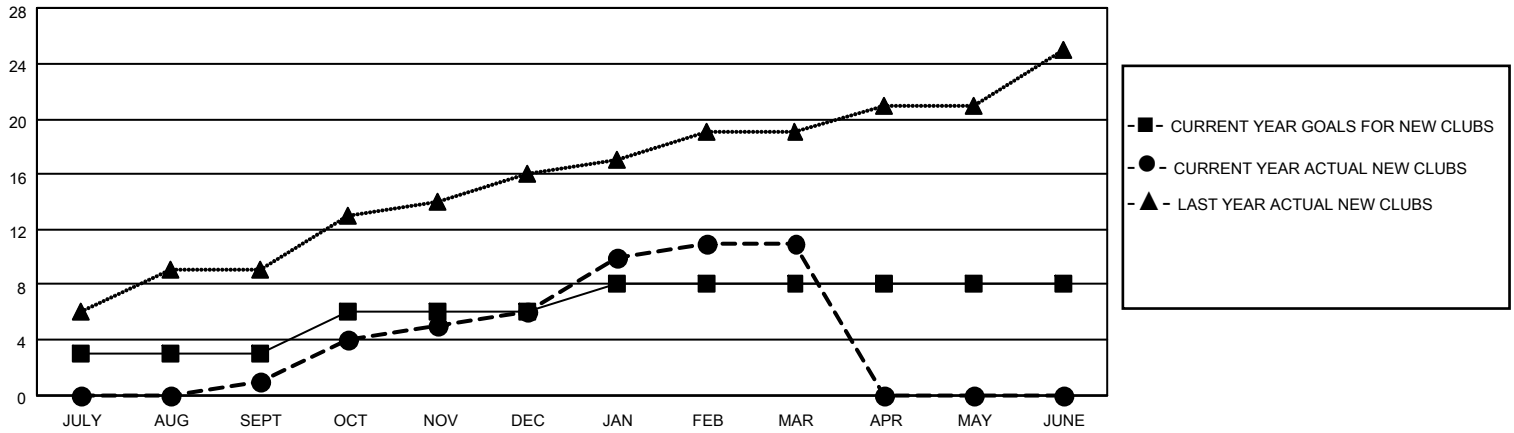
District 306 B2

Results as of: 3/31/2023

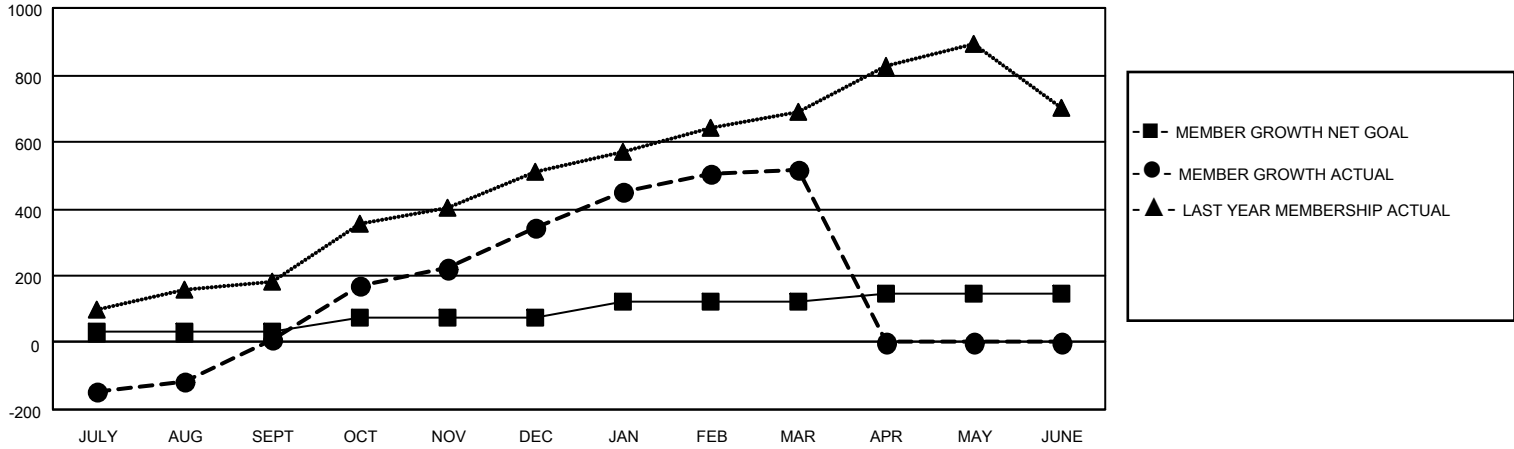
Clubs			
RESULTS FOR 2022-2023			
QUARTER	NEW CLUB GOAL	NEW CLUBS	DROPPED CLUBS
JULY/AUG/SEPT	3	1	6
OCT/NOV/DEC	3	5	0
JAN/FEB/MAR	2	5	0
APR/MAY/JUNE	0	0	0

Members			
RESULTS FOR 2022-2023			
QUARTER	MEMBER GROWTH NET GOAL	MEMBER GROWTH ACTUAL	DROPPED MEMBERS ACTUAL (including transfers)
JULY/AUG/SEPT	30	223	193
OCT/NOV/DEC	45	506	155
JAN/FEB/MAR	50	242	48
APR/MAY/JUNE	20	0	0

**GOALS AND ACTUAL NEW CLUBS CUMULATIVE**



**GOALS AND ACTUAL MEMBERS CUMULATIVE**



<b>DROPPED CLUBS: 6</b>	
<b>DROPPED MEMBERS</b>	
DECEASED	8
CLUB CANCELLED	124
OTHER	264
<b>TOTAL</b>	<b>396</b>

113 CLUBS OF 141 ADDED 1 OR MORE NEW MEMBERS

[CLICK HERE FOR CUMULATIVE MEMBERSHIP DATA](#)

<u>GENDER DISTRIBUTION</u>	
MALE	2,962 (71.17%)
FEMALE	1,200 (28.83%)
NON BINARY	0 (0.00%)
PREFER NOT TO ANSWER	0 (0.00%)
<b>TOTAL FAMILY UNIT MEMBERS</b>	<b>1,766</b>
<b>FAMILY MEMBERS PAYING HALF DUES</b>	<b>993</b>